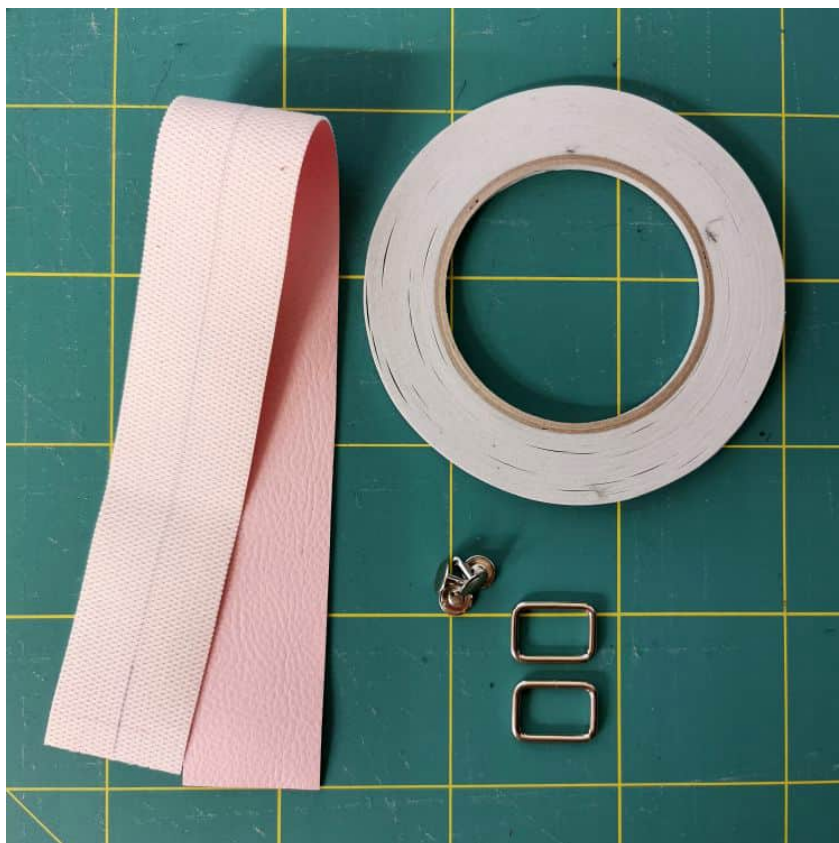


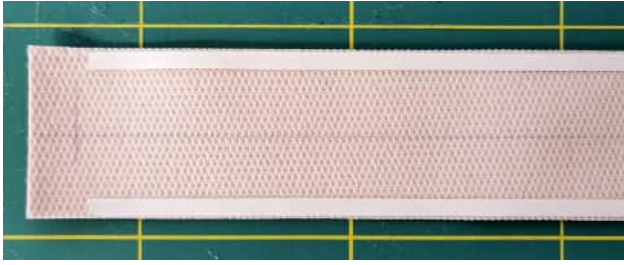
Sew handle



Following materials needed:

- 1 x stripe of outer fabric 40 cm H x 4 cm B (16" h x 1 1/2" w)
- 2 x square ring 20 mm (3/4")
- 2 x #10 double cap rivet
- double sided tape





1. Take the 40cm (16") stripe and mark the middle on the left side of the fabric. Glue a stripe of double sided tape on both long sides as described.

We start 1cm ($\frac{1}{2}$ ") from the short side and end with the double sided tape approx. 1cm ($\frac{1}{2}$ ") before the end of the stripe,



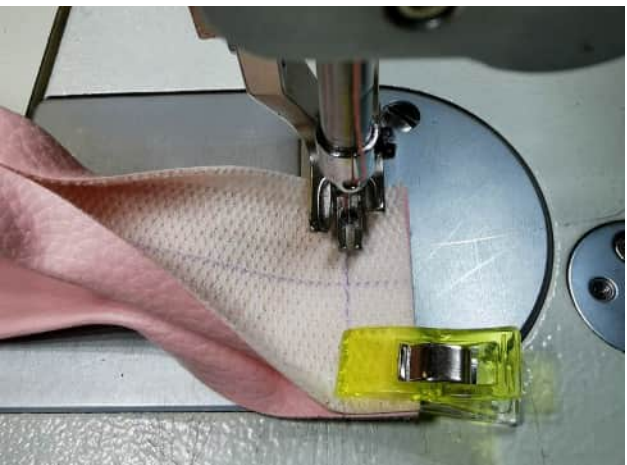
2. Remove the backing film from the Style-Fix. Fold both sides to the center, leaving approx. 5 cm (2") free at the beginning and end of the strip, which are not yet glued. Press everything firmly and clip the sides.



3. Now thread on the square rings.



4. Place the ends of the 40 cm (16") stripe right sides together and clip in place.



5. Now sew it together with a **seam allowance of 1 cm ($\frac{1}{2}$ ")**.



6. Trim the corners and glue double sided tape to the two short sides within the seam allowance.



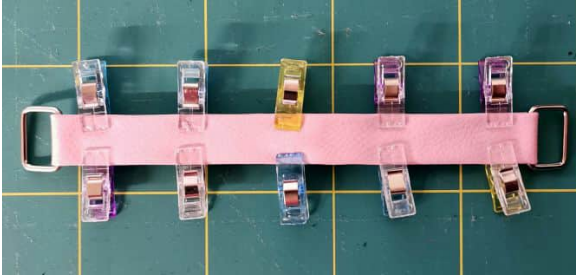
7. Remove the backing film from the double sided tape, unfold the seam allowance and press it.



8. Now glue the sides of the 40 cm (16") stripe that are still open to the middle and fix it with clips.



9. Fold the 40 cm (16") strip that the center is at the opposite of the seam allowance. The square rings are on the left and right.



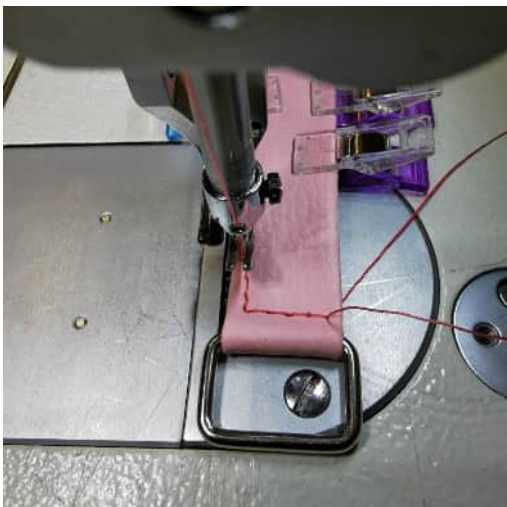
10. Clip everything in place



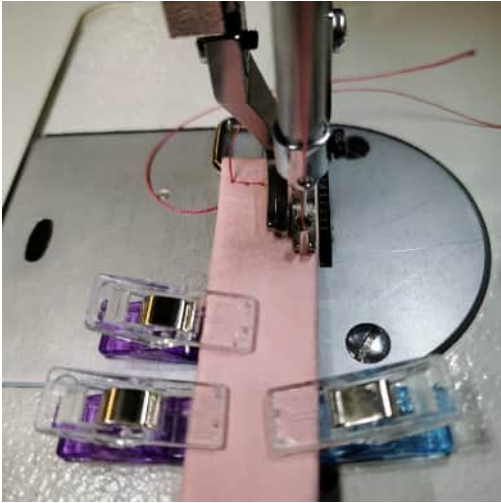
11. Topstitch the handle close to the edge. You start at the right square ring



12. Once at the long side, the needle remains in the material. Raise the presser foot and turn the handle so that the square ring is pointing downwards and the handle is pointing upwards.



13. Now sew 3 - 4 stitches backwards.



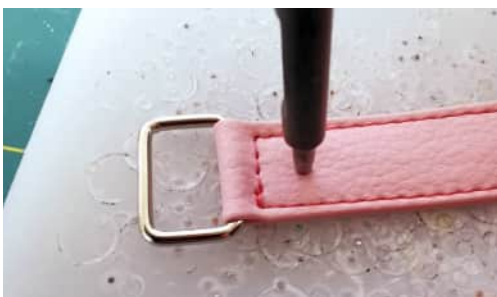
14. The needle remains in the material, raise the presser foot and turn the handle.



15. Sew all the way down to the 2nd square ring and repeat steps 12 - 16.



16. Now make a mark on the handle for the double hollow rivets. These are located 1.5 cm ($\frac{5}{8}$ ") from the center of the two square rings.



17. Now take your punching tool and punch a hole on both sides for the #10 double hollow rivets.



18. Now you can fasten the rivets with the suitable tool.

Congratulations, you've made it!

Your handle is finished.

