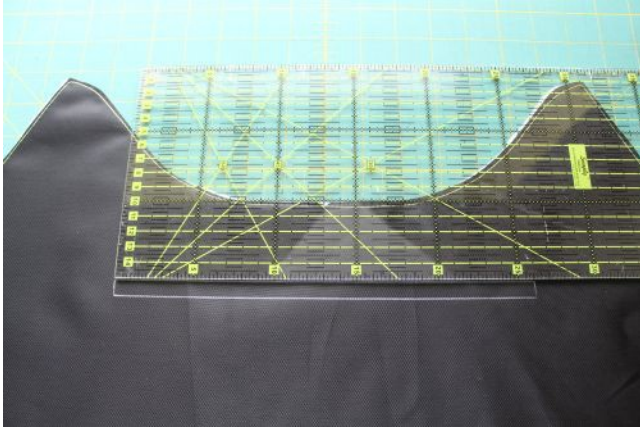


## Zippered pocket with bezel for the inner pocket made of lining fabric

Here I show you on the basis of my pattern "Mediana", how you can sew a zippered pocket with attached bezel for your lining

Please follow the instructions in the instructions of the pattern Mediana and adhere to the dimensions specified therein.





1. Mark the neckline for the zipper according to the instructions of your pattern.



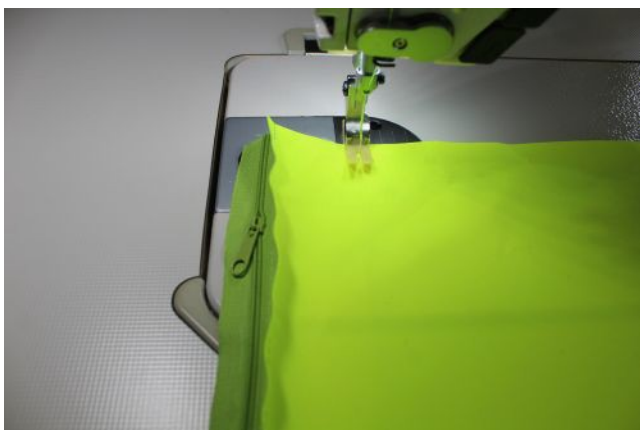
2. Cuts out the mark. Also shortens the gain slightly on the left side.



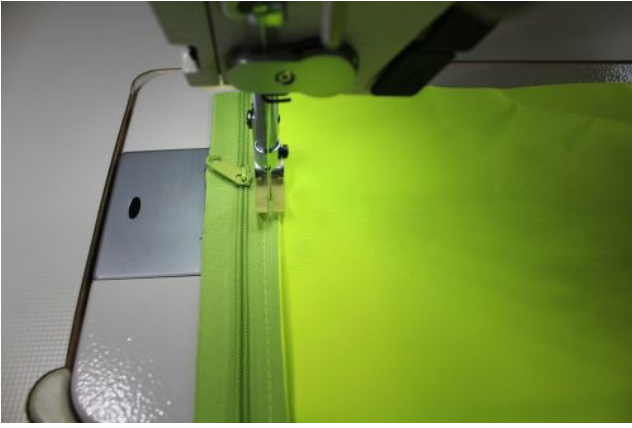
3. Put a lining fabric with the beautiful side up in front of you.

1 zipper with the length of the lining parts for the zipper compartment now comes - with the caterpillar facing upwards - on the lining fabric (see picture).

Sew on the zipper now.



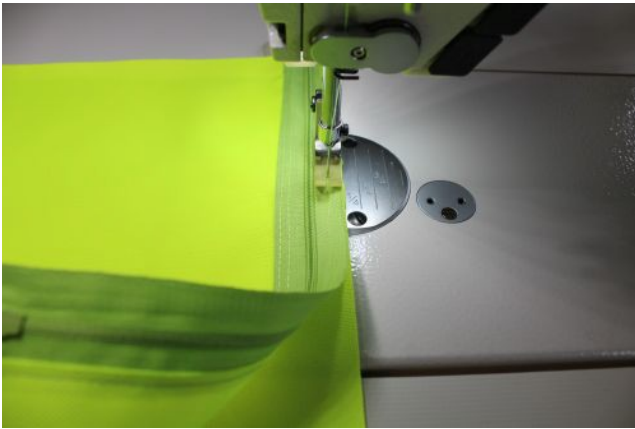
4. Folds the lining fabric from left to right under the zipper. The zipper with the caterpillar upwards is on the left side and the lining fabric with the left side upwards on the right side.



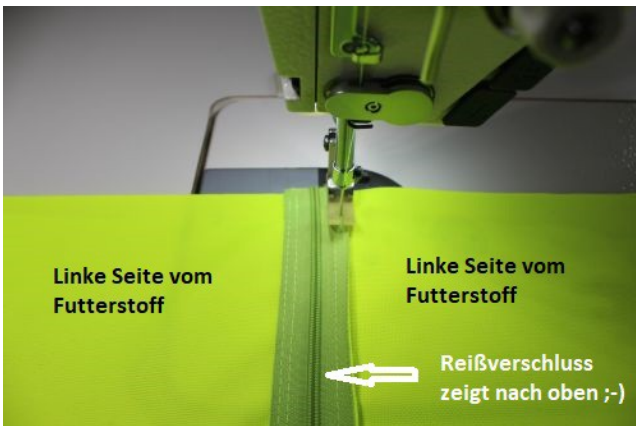
5. Press the seam addition onto the lining fabric and sew it tightly.



If you look at the zipper from the left side, you can see that we have a nice seam inside the compartment ;-).



6. Take the second part of the lining for the zipper compartment at hand and sews it on exactly as explained in steps 3 - 5.



Here you can see how the lining and the zipper must lie ;-).



7. Glue a strip style fix to the top and bottom of the zipper and loosen the carrier film.



8. Now place an inner lining from your pattern with the opening for the zipper in the middle over the zipper compartment made of lining fabric and press it a little.



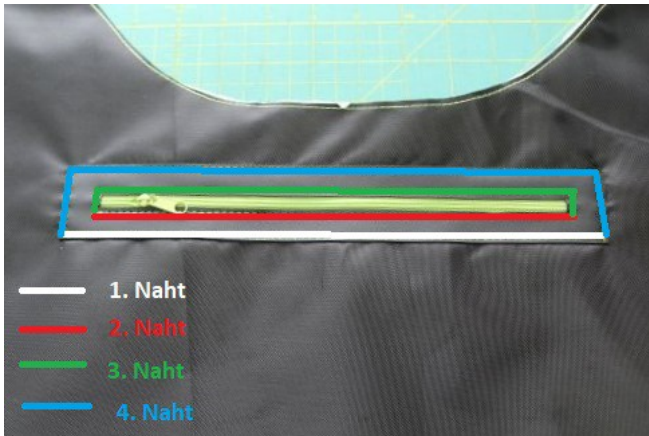
9. Take the attachment cover for the zipper compartment (dimensions according to pattern) and stick Style-Fix stripes on (see picture).



10. Loosens the carrier foil and places the attachment cover in the middle over the zipper. Squeezes everything a bit tightly.



11. The two lining fabrics from the zipper compartment are still folded apart under the lining part. Starts sewing the aperture below.



12. Sews the first seam (white) and then the 2. Seam (red). Now turn the lining part to the left side.



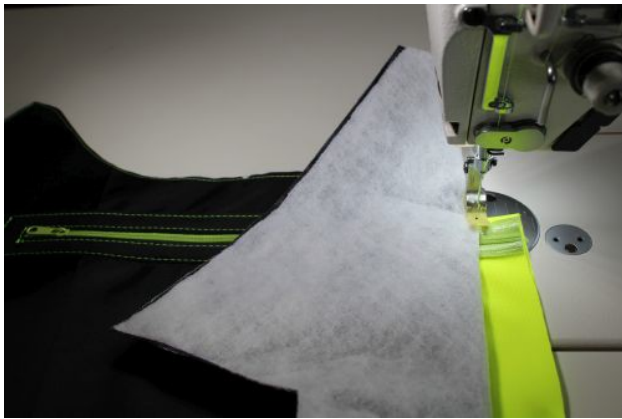
13. Remove the top lining from the zipper compartment and fold it down. Clamp both parts a little tightly and turn the lining part of the inner pocket back to the right side so that the bezel with the zipper is on top.



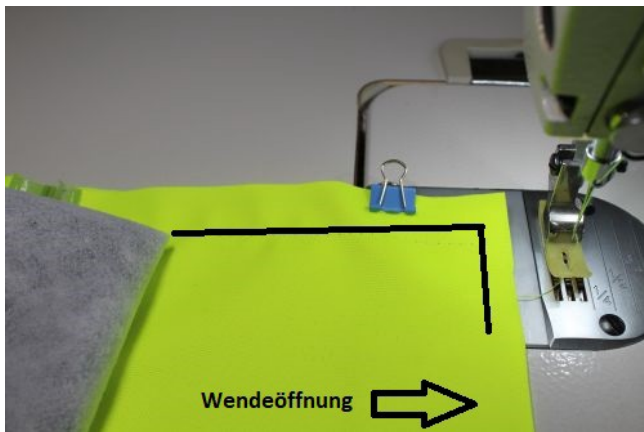
14. Now sew the 3rd and 4th. Seam (see picture, step 12).



15. Turn your back back over again and shorten the lining.



16. Now you sew the zipper compartment closed. To do this, the lining part of your inner pocket lies with the right side facing upwards. Folds the side to the left and sews the side from the zipper compartment to the bottom corner.



17. Seam from the corner about 5 cm and leave there a turning opening. Through this you could later close the bottom of the inner pocket ;-).



18. Now shorten the protruding lining and your zipper compartment is ready.